

Introducing the 96-Gallon Trash Cart

Mobility: Traditional trash barrels require people to carry or drag them to the curb. Anyone who finds a trashcan difficult to maneuver, including elderly and disabled residents, will appreciate how amazingly easy it is to roll an automated cart. It is mounted on sturdy wheels that have an outstanding industrial design for consistent performance. The cart's ergonomics are designed to prevent straining or bending.

Sturdy construction: Since the dawn of curbside collection, municipalities and trash companies have paid to replace countless damaged and worn-out trashcans. The sturdy automated cart greatly reduces these losses. Lids no longer blow away or get flattened in traffic; they're attached. The plastic shell is a high-density material that resists nature's elements, such as freezing New England winters and roasting Falls.

Ample, vertical storage area: Imagine the space recovered when you replace three to four trash barrels with just one! The 96-gallon cart occupies just 27-inches of horizontal space and is 44 inches tall.

Curb appeal: Farmington residents appreciate the beauty of their surroundings. Having uniform containers at curbs all over town will contribute to this aesthetic. Using automated carts also means there will be far fewer streets littered with trash or an assortment of blowing trashcans. Their solid construction makes them resistant to animal invasion and allows them to withstand winds – empty – up to 35 mph.

FREQUENTLY ASKED QUESTIONS

Can I set additional garbage by my cart?

No. All garbage must be placed in your cart for collection because an automated trash collection system is designed for the driver to remain in the vehicle. Still, your cart will hold up to six large bags of trash. Remember, your best defense against overflow is to “reduce, reuse, recycle.”

How does this affect other services, such as bulk pickup and yard waste management?

The April pickup was the last Town-wide bulky waste pickup. Effective July 1, 2008 the program will be changed to allow residents to contact the Highway & Grounds Division at 675-2550 directly to have bulky items picked up twice a year at no cost to the resident. In addition, the Division also has information for bulk guidelines, restrictions, and information regarding yard waste and leaf management.

What materials should never be thrown into the cart for curbside pickup?

The following materials create dangerous safety hazards and you should NEVER place them in your cart: hot embers, dirt, rocks, construction debris, paint, oils or any other hazardous materials.

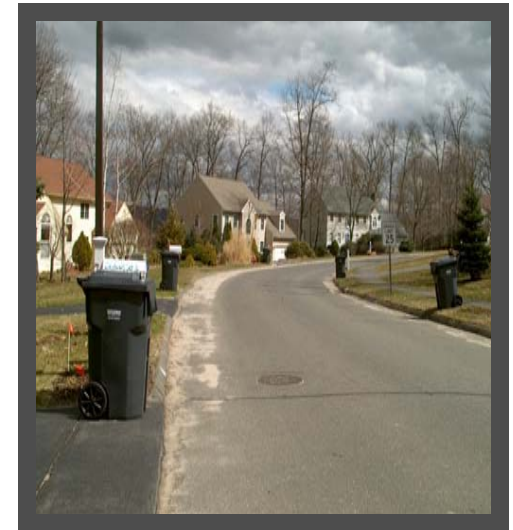
What if my cart becomes damaged or stolen?

Protecting your cart is your responsibility. All trash cart manufacturers strongly recommend keeping your trash cart clean. Always bag your trash before throwing it into the cart. Never throw loose trash or food scraps into the cart. Washing your cart often, inside and out, will lengthen its lifespan and deter animals. The Town reserves the right to charge for carts that are damaged through neglect, vandalism, abuse, or theft. If a replacement is required, the current price of an automated trash cart is about \$70.

How does this change affect my recycling?

There is no change to the recycling. Continue to use your blue container for recyclables. Anything pertaining to recycling will be posted to the Town website at www.farmington-ct.org.

Town of Farmington Automated Curbside Trash Collection



Department of Public Works
860-675-2550
[www.farmington-ct.org/TownServices/
PublicWorks/](http://www.farmington-ct.org/TownServices/PublicWorks/)

Waste Material Trucking
www.wastetrucking.com
Phone: 860-675-9682

Introducing Automated Trash Collection



The Town of Farmington, in partnership with Waste Material Trucking, will soon introduce a new, fully automated waste collection program—a modern approach to

managing trash in our homes. The program will begin the week of June 2, 2008 and will replace the current trash collection system in Farmington. Watch for additional public information on how the automated collection program works.

WHAT IS AUTOMATED COLLECTION?

Automated collection is a technologically advanced system of refuse collection and disposal. The system is called “automated” because a refuse truck, equipped with a hydraulic arm and controlled by a joystick inside the truck, automatically lifts your trash off the curb and empties it into the truck. The system requires you to use a specially designed trash cart that is compatible with the truck’s mechanical arm.

WHY IS AUTOMATED COLLECTION BETTER THAN TRADITIONAL METHODS?

The automated system is easier for residents and haulers alike! Your new cart is pet-resistant with an attached lid that helps reduce windblown litter and improves your neighborhood’s appearance on trash day. Litter, odor, mosquitoes and fly problems are greatly reduced. Please place all refuse in plastic bags, which will aid in keeping the cart clean. The cart also helps to save money. It keeps moisture out on rainy and snowy days, preventing heavy, water-soaked loads that cost more to dispose of. Automation will allow your community hauler to collect trash more efficiently by eliminating manual lifting, while dramatically improving safety.

HOW DO I OBTAIN A NEW CART?

Beginning mid-May 2008, one 96-gallon cart will be delivered to each residence (single and two-family homes only). There will be a serial number stamped on the rear of each cart for tracking purposes. If you should move, you will leave the cart behind to service the incoming residents. The cart will remain the property of the Town of Farmington.



WHEN DOES THE SYSTEM GO INTO EFFECT?

Beginning the week of June 2, 2008, place all your household trash in your new cart and wheel it to the curb the night before your regularly scheduled pickup day.

HOW DO I USE THE SYSTEM?

It’s easy! On the night before your regularly scheduled collection day, simply place your cart within 6 feet from the curb, or in the corner of your driveway. (Remember not to block the sidewalk!) Keep the cart at least 4 feet away from all other objects to avoid interference with the truck’s arm. (Objects include parked vehicles, fire hydrants, poles, recycling buckets, landscaping.) Once the new program begins the week of June 2, 2008, the automated truck will service ONLY the new carts; your old trash cans cannot be used.

WHAT CAN I DO WITH MY OLD CANS?

You may be able to use them around your house for various projects. You can wash them out and use them for storage. You can give them away, or you can contact Waste Material Trucking to dispose of them.

